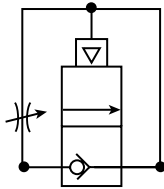


A

06P & 07P Auto Pilot Soft Start Valve

Features

- Smooth start-up of pneumatic system
- Air pilot operation
- Large flow capacities up to 5.5 Cv
- Inline or Modular Mounting



06P



07P

Operation

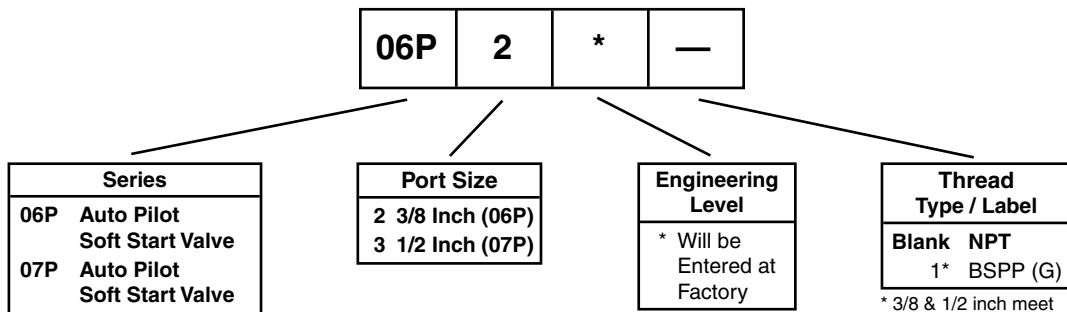
When pressure is supplied to the inlet port, gradual filling of the downstream system occurs through the adjustable needle valve. The piston opens the main valve when the downstream side of the valve reaches approximately 60% of the supply pressure. The ramp up time to reach the switch over pressure is adjustable via the needle valve in the cover.

The Auto pilot soft start valve is not intended to be used as a shut off valve and should always be placed after a shut off valve.

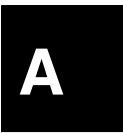
CAUTION: Do not use synthetic, reconstituted, or oils with an alcohol content or detergent additive.

CAUTION: Do not restrict the inlet of valves having an internal pilot supply. Pressure supply piping must be the same size as the inlet port or larger to insure that the pilot valve receives sufficient pressure supply during high flow conditions.

Ordering Information



* 3/8 & 1/2 inch meet ISO 1179-1 Standard.



Performance Characteristics

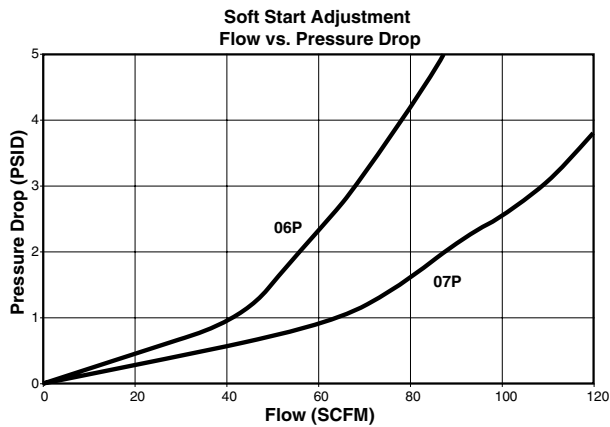


Table 1: Shows the relationship between the inlet pressure and downstream pressure at which the main valve opens.

Inlet Pressure PSIG	Downstream Pressure PSIG	
	06P	07P
75	45	25
100	60	33
125	75	38
150	85	45

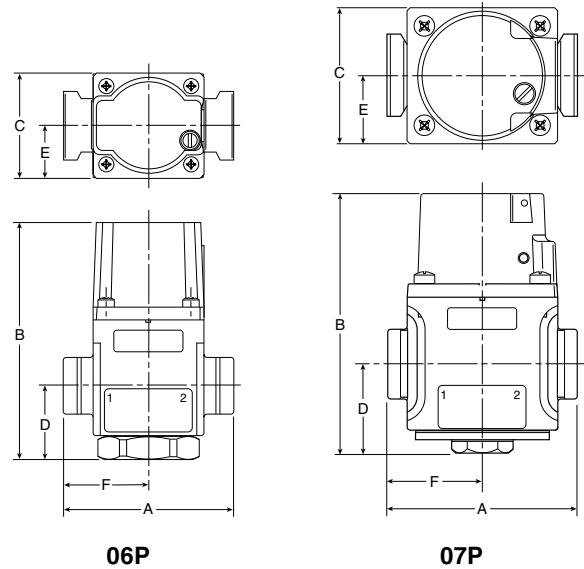
Table 2: Product forward Flow Cv (1 to 2).

Series	Flow Cv
06P	3.8
07P	5.5

Dimensions:

Model	Port Size	A	B	C	D	E	F
06P	3/8"	3.36 (85)	4.70 (119)	2.08 (53)	1.48 (38)	1.04 (26)	1.68 (43)
07P	1/2"	3.81 (96)	5.21 (132)	2.07 (53)	1.80 (46)	1.37 (35)	1.91 (48)

Inches (mm)



Repair Kits

- 06P Repair KitPHRKSS75
- 07P Repair KitPHRKSS105
- 06 Modular Body Connectors PS754P
- 07 Modular Body Connectors PS854P

Materials of Construction

- Body Aluminum
- Bottom Plug –
 - 06P Brass
 - 07P Zinc

Specifications

- Maximum Pressure 300 PSIG (20.7 bar)
- Minimum Operating Pressure 30 PSIG (2.1 bar)
- Temperature Ratings 40°F to 120°F (4°C to 49°C)
- Opens to Full Flow 60% Supply Pressure
- Weight –
 - 06P 2.75 lb. (1.25 kg)
 - 07P 4.50 lb. (2.04 kg)

